



## Bollettino Informazione Tecnica / Technical Information Bulletin

compilato da / compiled by	approvato da / approved by	data / date	codice / code	TIB
Dario Antonino	Antonino Niosi	22/12/16	800000   02	
prodotto / product				
KX DRIVER 7.0 (generic PCL)				
Sistemi interessati / system concerned				
see the products list in description				
titolo / subject				
"KX702415_UPD_OLIVETTI_RC6_B_SIGNED"				

## Descrizione/Description

Beginning from December 22<sup>nd</sup> 2016 the new **KX DRIVER 7.0** library (**Kx702415\_UPD\_Olivetti\_RC6\_B\_signed.zip**) is present in FTP Tecnico Professional repository on [www.olinet.biz](http://www.olinet.biz).

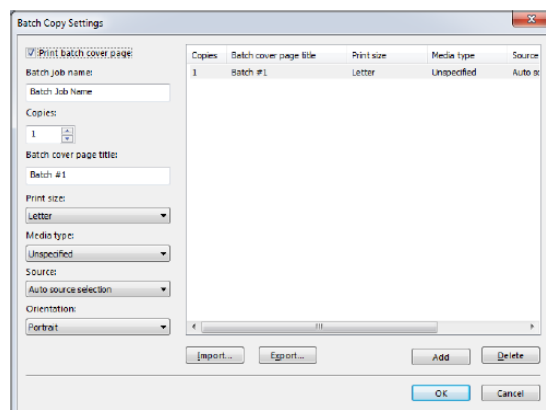
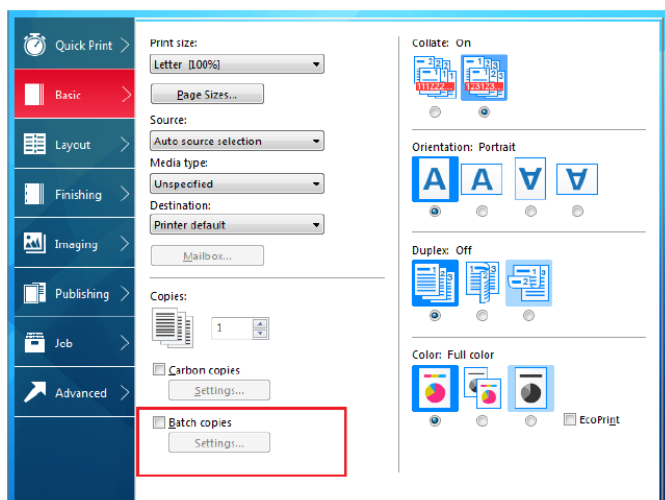
## New Features

### 1. New User Interface Design

The user interface of KX DRIVER 7.0 is designed based for giving the idea of unification and implementation across Kyocera based products. The new design will have a similar look and feel for Kyocera based products from device panels to drive and utilities.

### 2. Batch Copies

This feature separates the copies of a print job into batches and print them with a cover page (for each batch of document). A typical use case would be print a test document with a cover page by setting different parameters that will be used by several classes with different numbers of students in each class.

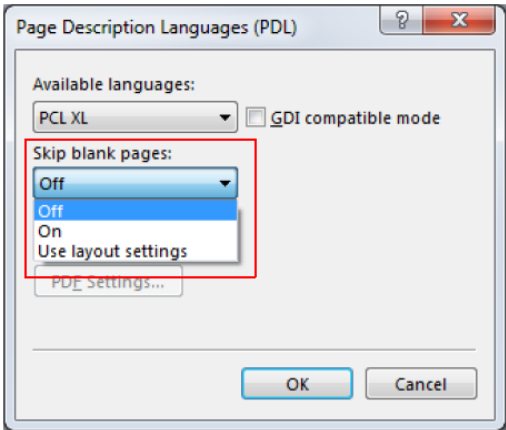


data / date	codice - progr./ code - number	TIB
22/12/16	800000	02

In the Batch Copy Setting dialog box, users can add batches to the list and select the numbers of copies in each batch. A cover page can be added to each batch. A cover page can have Batch job name and Batch cover title. Print size, Media type, Source and Orientation can also be selected for each batch. Import and Export function is included in the feature.

3. **Enabled Skip Blank Pages**

This feature supports skipping of blank pages during printing when Duplex, Multiple pages per sheet, and/or Booklet are enabled. In previous versions, Duplex, Multiple pages per sheet, and Booklet are constrained when using the Skip blank pages feature.



The following options are available for Skip blank pages:

- “Off” – prints all pages, including blank pages.
- “On” – skips all blank pages – this is the new functionality in this version.
- “Use layout settings” – retains blank pages in the print job if Duplex, Multiple pages per sheet, and/or Booklet are enabled. The blank pages are only skipped during simplex printing. This is the same as the old Skip blank pages setting in previous KX DRIVER versions.

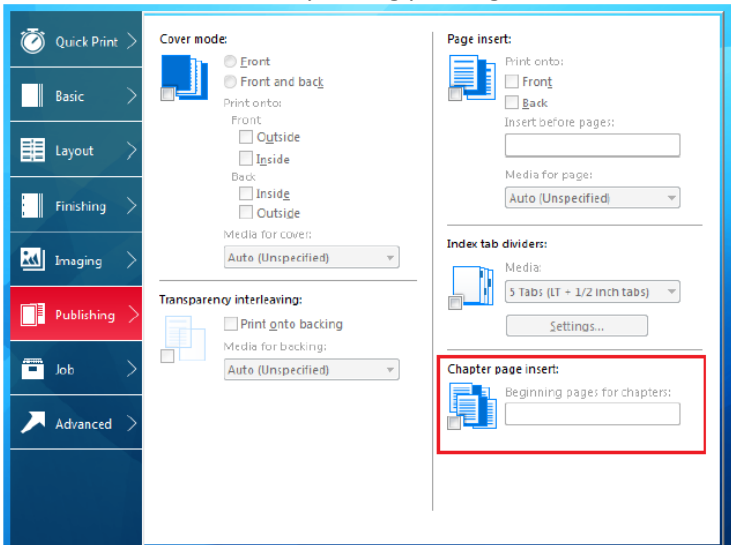
The targeted blank page for this feature is only the one generated by an application. If KX DRIVER inserts one or

more blank pages with Publishing features (Cover mode, Page insert, Chapter page insert, or Index tab dividers), the blank page is printed.

4. **Chapter Page Insert**

This feature enables a user to specify the beginning page of a chapter in a document so that the page will be printed on the front side of the paper. This ensures that the first page of all chapters is printed on the front side of the paper.

A user does not have to manually rearrange the layout of pages in the document to achieve this result because the printer driver will do it automatically during printing.



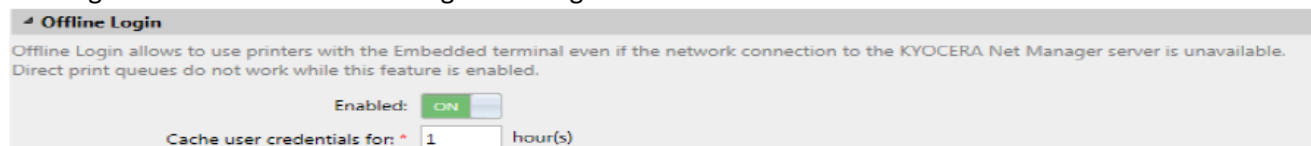
data / date	codice - progr./ code - number	TIB
22/12/16	800000 02	

## 5. Net Manager Caching Credentials Information

This is a new driver feature in support of additional features for Net Manager (KNM) 5.3.

In the old behavior, the driver user interface cannot be opened for setting up and printing is not possible if the driver cannot connect to the KNM server. In the new behavior, it is possible for driver to be opened and printing to commence even if the driver cannot temporarily connect the KNM server.

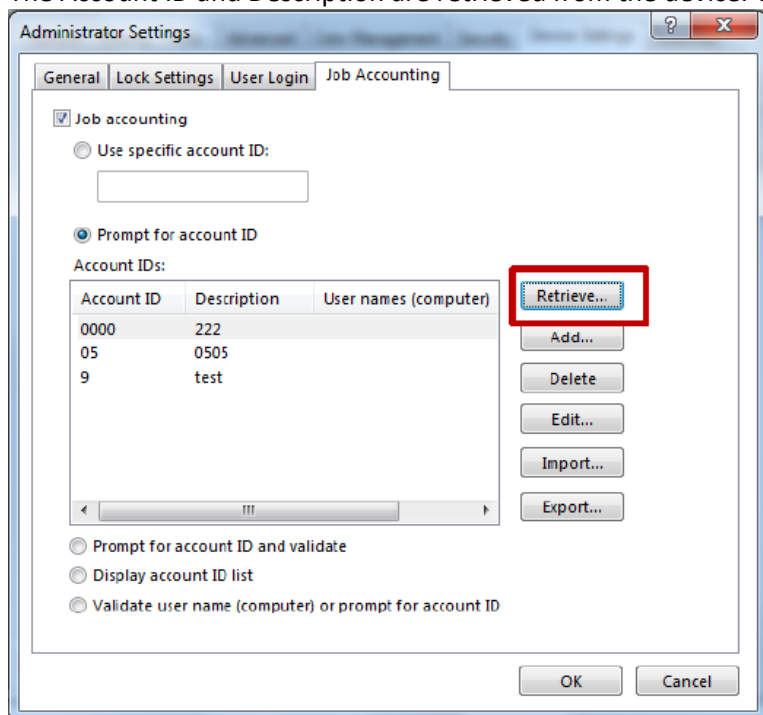
Caching can be enabled in KNM using this dialog box:



- For every successful connection to the KNM server, the driver caches in the host the credentials information it receives from KNM server.
- When connection is not successful, the driver reads the cached info:
  - Current credentials information
  - Expiration date
- This feature is enabled only within the preset time since the information was last retrieved.

## 6. Retrieve Device Job Accounting List

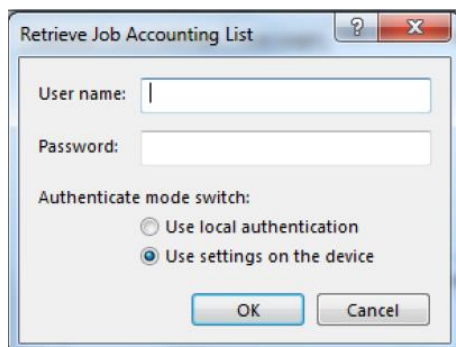
With this feature, the Job accounting list that is currently saved on the device can be retrieved and stored in the driver. After retrieving the job accounting list, the existing list is overwritten with the list retrieved. The Account ID and Description are retrieved from the device. The retrieved list replaces any existing list.



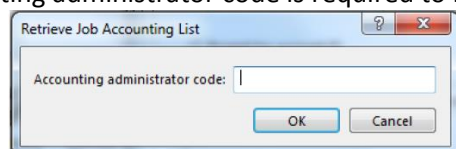
Users must log in to the device from the driver to be able to retrieve the Job accounting list.

- For some models, User name and Password are required to log in. Users must also select the authentication type:

data / date	codice - progr./ code - number	TIB
22/12/16	800000 02	



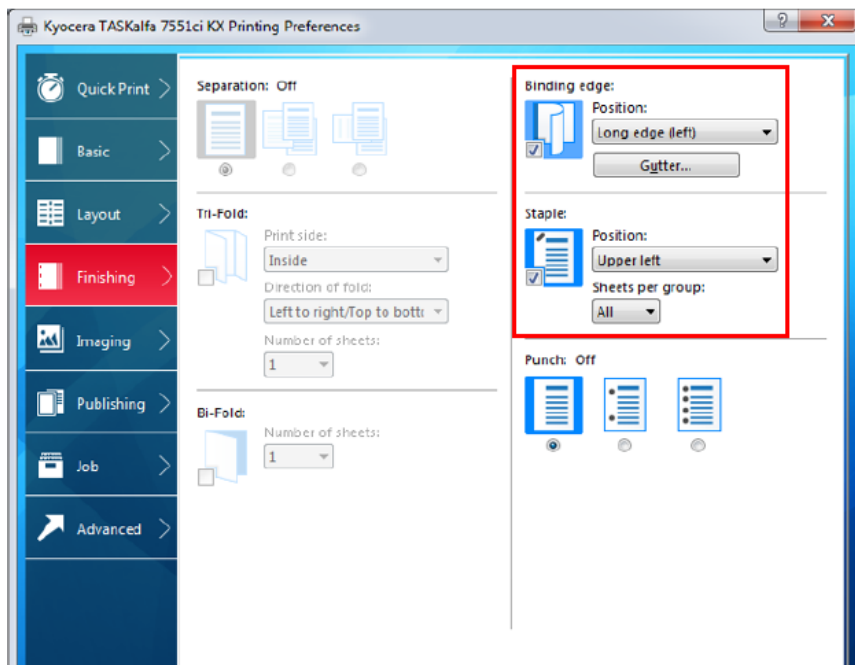
- For some models, the Accounting administrator code is required to log in.



When valid login details are sent to the device, they are saved in the driver. When a user opens the login dialog box again, the saved login details are displayed.

## 7. Staple Position

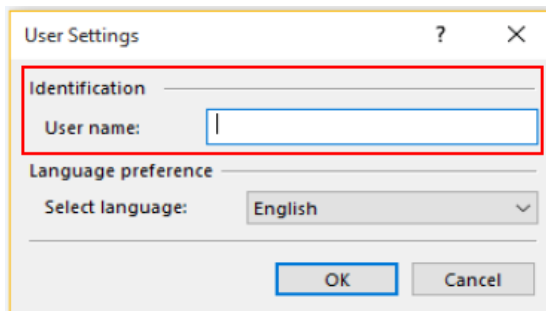
This feature provides improved usability for stapling. When Staple is selected, Binding edge is selected automatically. This helps in selecting staple positions.



data / date	codice - progr./ code - number	TIB
22/12/16	800000 02	

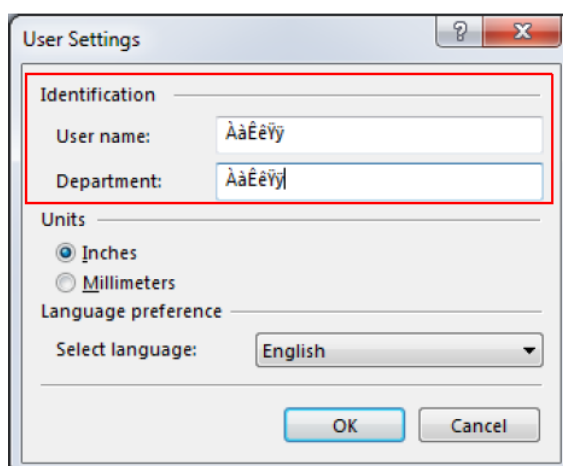
## 8. User-based Username

Client users can change their user name in the shared printer driver environment. The default User name is the User name setting on the administrator or server side. Any changes made in the client user side do not change the settings in the administrator or server side.



## 9. Double-byte support for User Settings

In the User Settings dialog box, double-byte characters are supported for the User name and Department.



## 10. Umlaut Support for User Login

For User Login, umlaut characters can be used for User name and Password. This feature does not change the user interface.

Supported umlaut characters include the following:

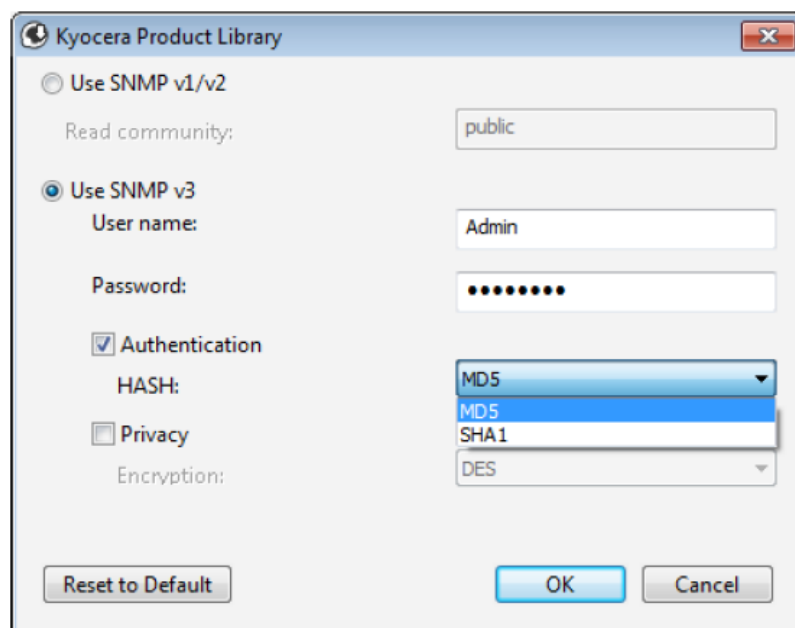
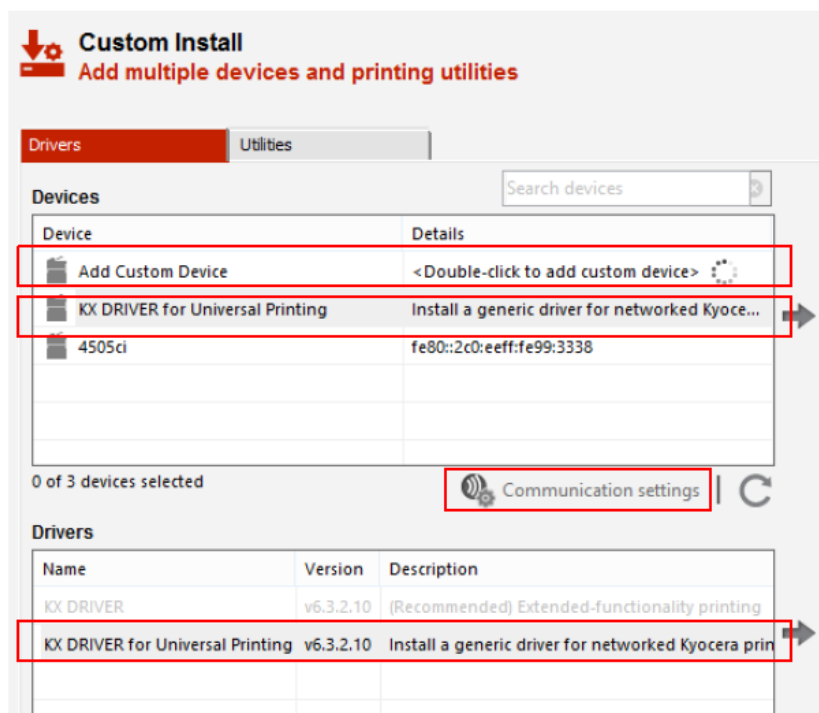
ÄäÅåAa ČčĆćĈĉ ĎďĐđ ÊêËëĒēĖė ĞğĜğĠġ Ħħ Ħ ĩĩİİİİ İİİİİİ ĶķĶ  
 ĹĺĻļŁłŁ ŁłŁŁŁŁ ĹĺŁłŁłŁł ŒœŒŒŒŒŒŒ ŠšŠšŠšŠš ŠšŠšŠšŠš ŠšŠšŠšŠš ŠšŠšŠšŠš  
 Ŵŵ ŶŷŶ ŹźŻżŽž ŮňŇňŇňŇň ŐőŐőŐő ŒœŒŒŒŒŒŒ ŠšŠšŠšŠš ŠšŠšŠšŠš ŠšŠšŠšŠš  
 Ŧŧ ŮŮŮŮ Ŷŷ Źź ŹźŹźŹźŹź plll#! DZDzdzLJLj IjNjNjnj ÄäÏöÜüÜüÜüÜüÜü  
 äÄäÄäÄä GgGgKk QqQq Źź DZDzdz ĞğHjNn ÄäÆæØø ÄäÄäËëËë ĩĩ ŐőŐő  
 ŔŕŔŕ ŮüÜü ŠšŦŧ ŹźĤĤ ŧ88 Źź ÄäËë ŐőŐőŐőŐő Ŷŷ Ľľŧŧŧŧ AŁŁŁŁŁ ŁŁŁŁŁŁ  
 ŁŁŁŁŁŁŁŁ ŁŁŁŁŁŁŁŁ ŁŁŁŁŁŁŁŁ ŁŁŁŁŁŁŁŁ ŁŁŁŁŁŁŁŁ ŁŁŁŁŁŁŁŁ ŁŁŁŁŁŁŁŁ  
 ŁŁŁŁŁŁŁŁ ŁŁŁŁŁŁŁŁ ŁŁŁŁŁŁŁŁ ŁŁŁŁŁŁŁŁ ŁŁŁŁŁŁŁŁ ŁŁŁŁŁŁŁŁ ŁŁŁŁŁŁŁŁ

data / date	codice - progr./ code - number	TIB
22/12/16	800000 02	

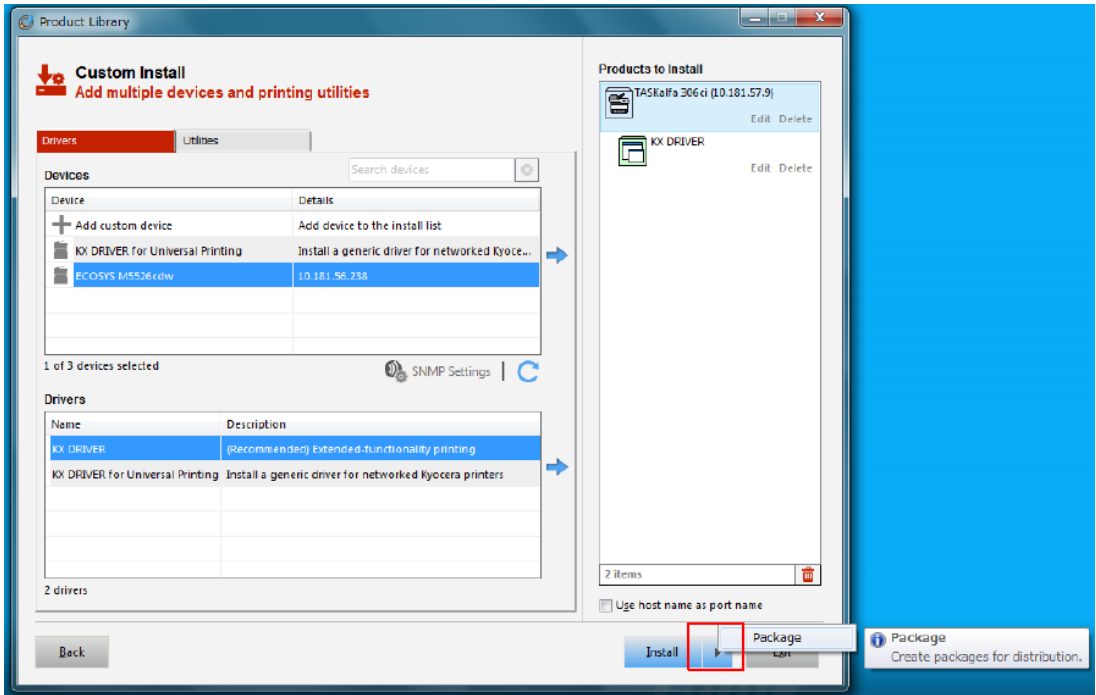
## 11. Installer v5.1

The newest installer has improved usability(or user friendly operability), including the following additional features:

- “Add Custom Device” listed on the “Devices” list
- “KX DRIVER for Universal Printing” listed on both the “Devices” list and the “Drivers” list
- SNMPv3 support
- Installation package creation for specific product to distribute to clients



data / date	codice - progr./ code - number		TIB
22/12/16	800000	02	



Supported O.S.

O.S.	Memo
MS Windows Vista	32 bit
MS Windows Vista	64 bit
MS Windows 7	32 bit
MS Windows 7	64 bit
MS Windows 8	32 bit
MS Windows 8	64 bit
MS Windows 8.1	32 bit
MS Windows 8.1	64 bit
MS Windows 10	32 bit
MS Windows 10	64 bit
MS Windows Server 2008	32 bit
MS Windows Server 2008 / R2	64 bit
MS Windows Server 2012	32 bit
MS Windows Server 2012 / R2	64 bit
MS Windows Server 2016	64 bit

data / date	codice - progr./ code - number		TIB
22/12/16	800000	02	

## Interested Olivetti Product

[Kx702415\\_UPD\\_Olivetti\\_RC6\\_B\\_signed.zip](#)

Device Name	note
d-Color MF2001	
d-Color MF2001 plus	
d-Color MF2500	
d-Color MF2501	
d-Color MF2552	
d-Color MF2552 plus	UPD* supported
d-Color MF2603	
d-Color MF2603 en	
d-Color MF2603 plus	
d-Color MF2604	
d-Color MF2604 en	
d-Color MF2604 plus	
d-Color MF2613 plus	
d-Color MF2613en	
d-Color MF2614 plus	
d-Color MF2614en	
d-Color MF3003	UPD* supported
d-Color MF3004	UPD* supported
d-Color MF3503	UPD* supported
d-Color MF3504	UPD* supported
d-Color P2021	
d-Color P2021	
d-Color P2026	
d-Color P2026	
d-Color P2130	UPD* supported
d-Color P216	
d-Color P220	
d-Color P221	
d-Color P221 special	
d-Color P226	
d-Copia 15	
d-Copia 16MF	
d-Copia 1800MF	
d-Copia 18MF	



data / date	codice - progr./ code - number		TIB
22/12/16	800000	02	

Device Name	note
d-Copia 20	
d-Copia 200MF	
d-Copia 2200MF	
d-Copia 25	
d-Copia 2500	
d-Copia 2500MF	
d-Copia 250MF	
d-Copia 253MF	
d-Copia 253MF plus	
d-Copia 283MF	
d-Copia 284MF	
d-Copia 300	
d-Copia 3000	
d-Copia 3000MF	
d-Copia 3001MF	
d-Copia 3002MF	
d-Copia 3002MF plus	
d-Copia 3003MF	
d-Copia 3004MF	
d-Copia 300MF	
d-Copia 3013MF plus	
d-Copia 3014MF	
d-Copia 303MF	
d-Copia 35	
d-Copia 3500MF	
d-Copia 3500MF plus	
d-Copia 3502MF	UPD* supported
d-Copia 3502MF plus	UPD* supported
d-Copia 3503MF	
d-Copia 3504MF	
d-Copia 3513MF	
d-Copia 3514MF	
d-Copia 40	
d-Copia 400	
d-Copia 4000MF	UPD* supported
d-Copia 4003MF	UPD* supported
d-Copia 4003MFplus	UPD* supported
d-Copia 4004MF	UPD* supported

data / date	codice - progr./ code - number		TIB
22/12/16	800000	02	

Device Name	note
d-Copia 4004MFplus	UPD* supported
d-Copia 400MF	
d-Copia 403MF	
d-Copia 403MF en	
d-Copia 403MF plus	
d-Copia 404MF	
d-Copia 404MF en	
d-Copia 404MF plus	
d-Copia 4200MF	
d-Copia 45	
d-Copia 4500MF	
d-Copia 4500MF plus	
d-Copia 500	
d-Copia 5000MF	UPD* supported
d-Copia 5004MF	UPD* supported
d-Copia 500MF	
d-Copia 5200MF	
d-Copia 55	
d-Copia 5500MF	
d-Copia 5500MF plus	
d-Copia 600	
d-Copia 6000MF	UPD* supported
d-Copia 6004MF	UPD* supported
d-Copia 6200	
d-Copia 63	
d-Copia 6500MF	
d-Copia 6500MF plus	
d-Copia 800	
d-Copia 8000MF	
d-Copia 8000MF plus	
d-Copia 8200	
PG L2028	
PG L2028 special	
PG L2035	
PG L2040	
PG L2045	
PG L2130	

data / date	codice - progr./ code - number		TIB
22/12/16	800000	02	

Device Name	note
PG L2135	
PG L2140	
PG L2145	
PG L2150	
PG L2235	
PG L230	
PG L2335	
PG L235	
PG L2435	
PG L245	

\* **UPD (Universal Print Driver)** is an intelligent print driver that supports a broad range of HP LaserJet printers and MFPs (Multi-Function Products). Developed by *Hewlett-Packard*, it combines a general purpose driver (UNIDRV or PSCRIPT) and HP proprietary extensions. **UPD** simplifies driver deployment and management. This advanced print driver has the ability to discover printing devices and automatically configure itself to the device capabilities (e.g., duplex, color, finishing, etc.).

**Universal Print Driver** is a *Microsoft Windows* solution that provides two modes of operation, traditional and dynamic. In traditional mode, the **UPD** behaves similarly to traditional print drivers. In dynamic mode, it provides discovery, auto configuration, and management features that are particularly well suited for mobile computer users.